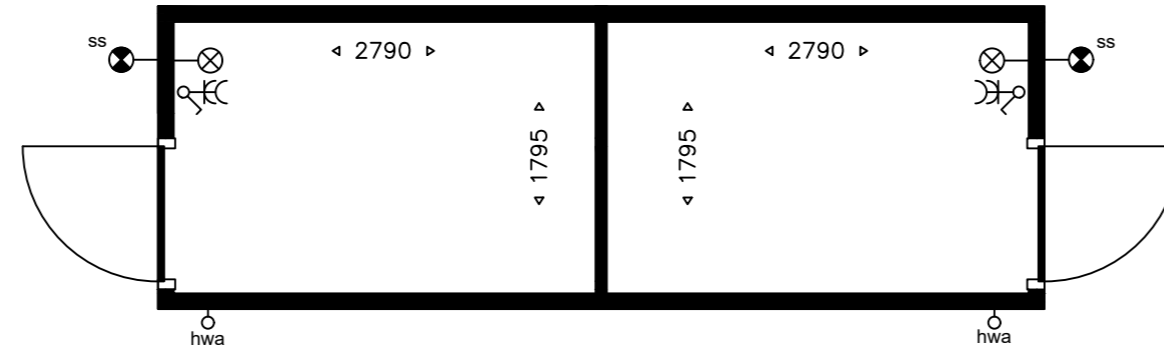
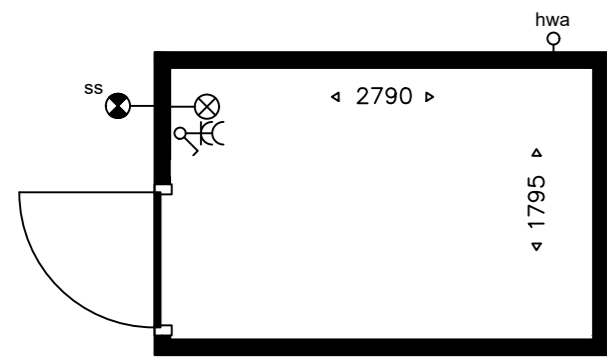


houten berging enkel, type A1

houten berging dubbel, type A2



Renvooi Installaties

- wandlichtpunt
- wandlichtpunt incl. armatuur met schemerschakeling
- enkelpolige schakelaar
- dubbele w.c.d. + randaarde
- hwa

afhankelijk van de situatie kunnen bergingen/deuren/hwa's gespiegeld worden uitgevoerd (zie situatietekening VT-100)

houten berging enkel, type A1

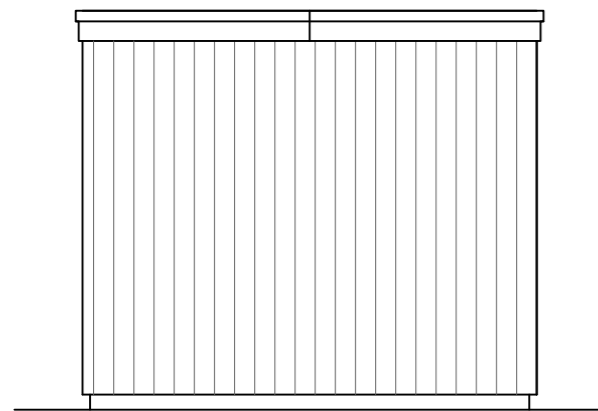
bnr 184, 187, 194, 205, 214, 228, 239, 240, 243, 248, 250, 252, 255, 256.

houten berging dubbel, type A2

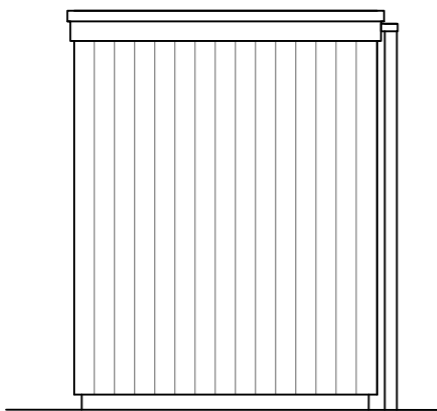
bnr 185-186, 188-189, 190-191, 192-193, 195-196, 197-198, 199-200, 201-202, 203-204, 206-207, 208-209, 210-211, 212-213, 216-217, 218-219, 226-227, 231-232, 235-236, 237-238, 241-242, 244-245, 249-251.

houten berging dubbel, type A3

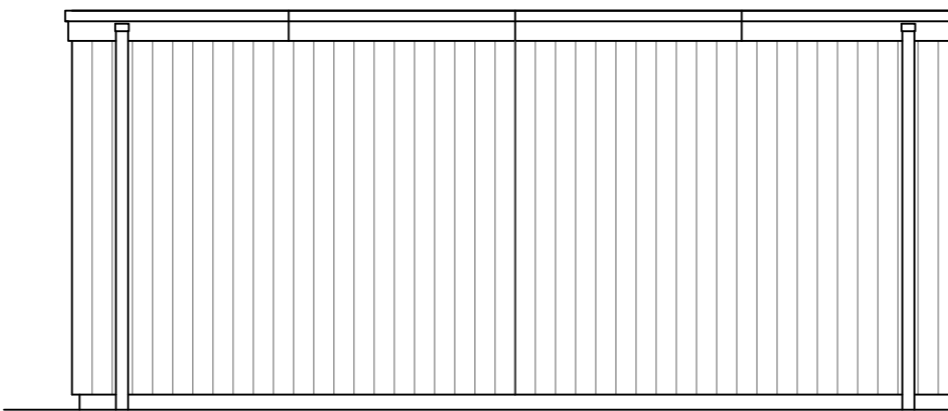
bnr 220-221, 229-230, 233-234, 246-247, 253-254, 257-258, 259-260.



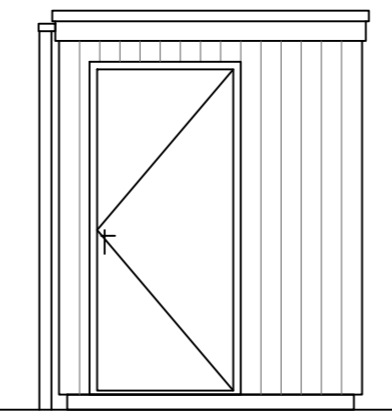
zijgevel



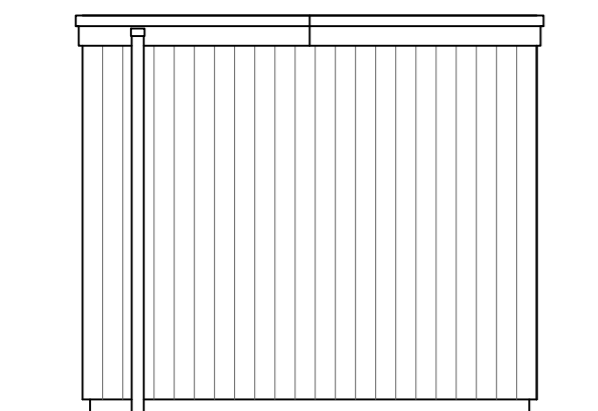
achtergevel



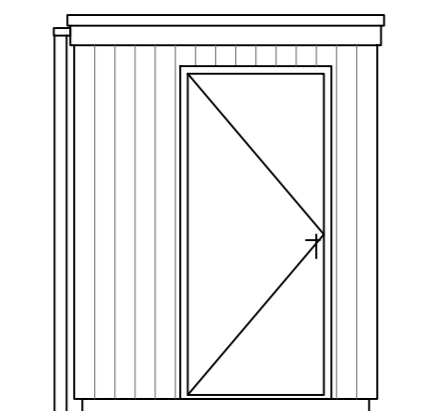
Voorgevel



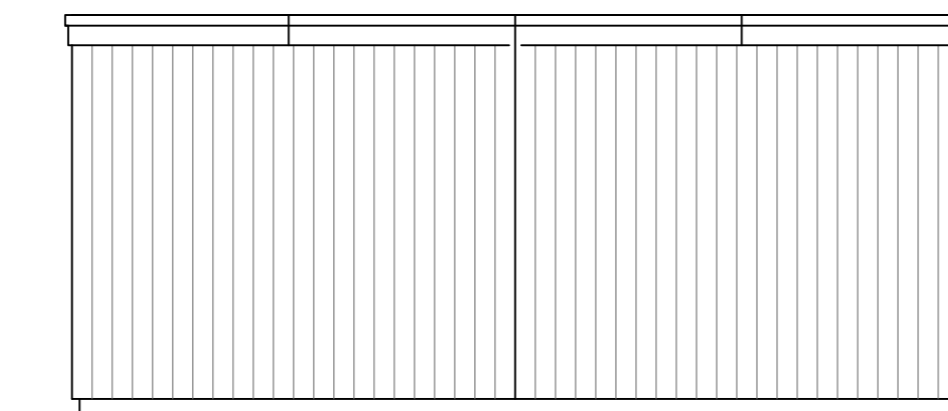
Zijgevel



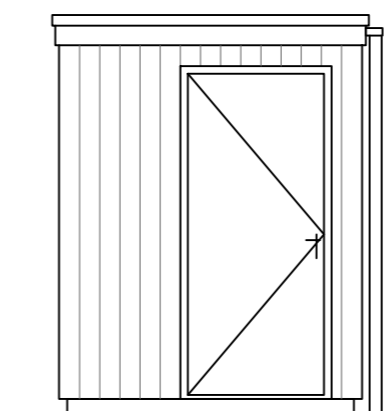
zijgevel



voorgevel

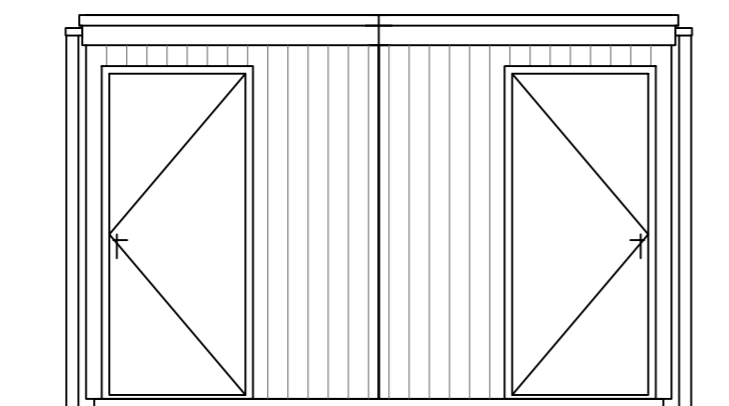
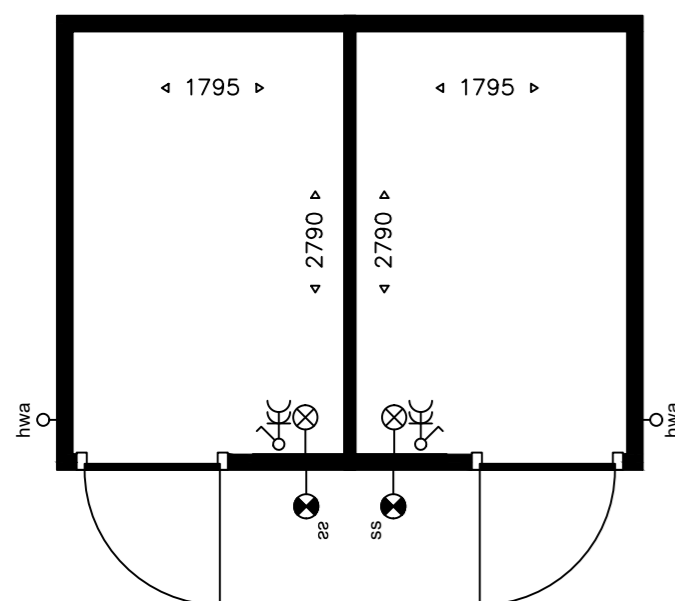


Achtergevel

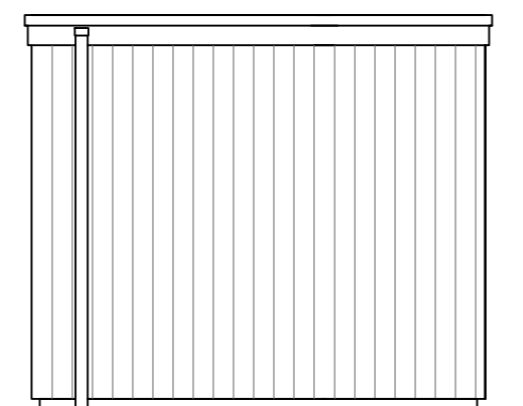


Zijgevel

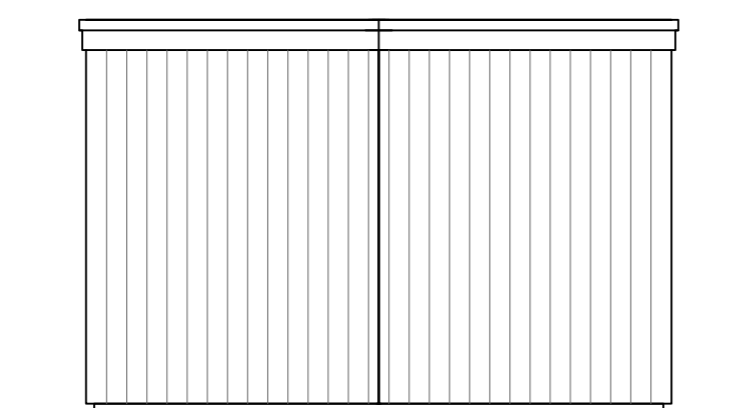
houten berging dubbel, type A3



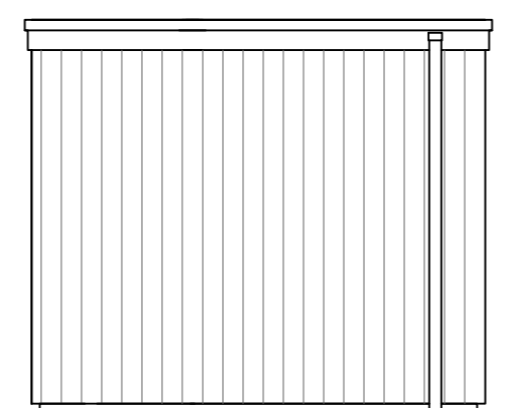
Voorgevel



Zijgevel



Achtergevel



Zijgevel

Weespersluis

Lanenrijk fase 2A1



76 woningen type A1, A2 en A3

Bergingen